

WHAT YOU NEED TO KNOW FOR YOUR GABLE-TOP CARTON PROJECT

QUOTE PROCESS for a Gable Top Carton

1

STEP ONE

Identify your annual order quantity.

2

STEP TWO

Share the ingredients of your contents.

3

STEP THREE

What brand of equipment will you use to fill and seal your container (NIMCO, Galdi, Other)?

4

STEP FOUR

Select a gable size.

5

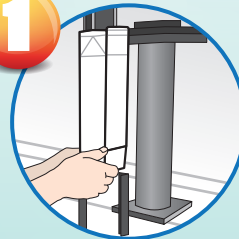
STEP FIVE

Specify your design and printing requirements.

FILLING & SEALING PROCESS

on semi-automated machine
for a Gable Top Carton

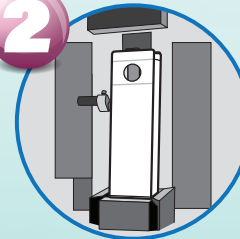
1



STEP ONE

A hand pre-broken and erected carton is mounted on the mandril of the sealing machine.

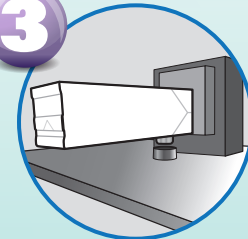
2



STEP TWO

Bottom of carton is heated, folded and sealed.

3



STEP THREE

Carton is removed from sealing machine. Cap is placed in carton, then mounted on cap machine. Cap is then ultrasonically welded in place.

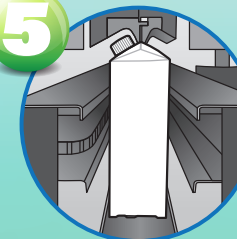
4



STEP FOUR

Carton is then filled with product.

5



STEP FIVE

Carton is placed back in the sealing machine. The top of carton is then heated, folded and sealed.









Carton Service
Creating - Sustaining - Innovating



SIZES CURRENTLY AVAILABLE

for a Gable Top Carton

 <p>GALLON IMPERIAL GALLON SQUAT</p>	 <p>HALF GALLON IMPERIAL HALF GALLON</p>	 <p>HALF PINT PINT QUART 1000 ml</p>	 <p>250 ml 330 ml 500 ml</p>	 <p>CUSTOM SIZES also available. Just ask!</p> <p>VARIOUS CLOSURES also available.</p>
--	---	--	--	---

